



Access Safety Fencing Stock/Price List 2024



- **Strong Budget Range** - 20x20 RHS Frame, 100x20x3mm Mesh
- **High Level Panels** - gives O/A fence height of 2020mm (120mm air gap at bottom) ****New low level 960 high panels & 1080 posts also available!****
- **Conforms To:** BS EN ISO 14120:2015 General requirements for the design, construction and selection of fixed and movable guards.

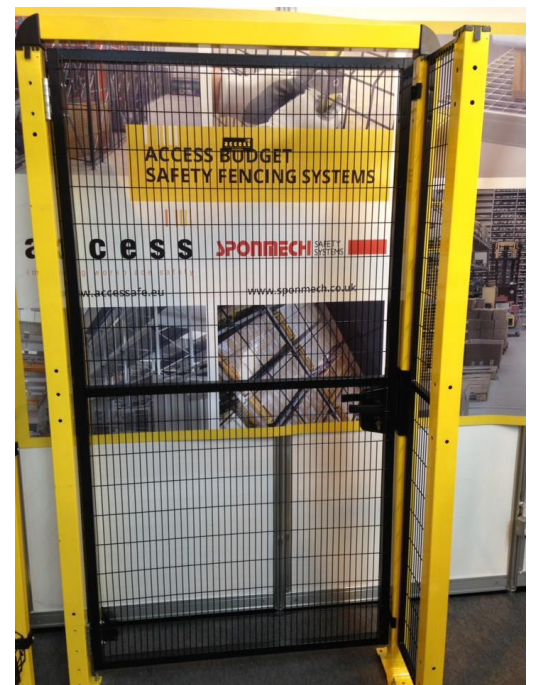
Panel Sizes

1900	x	250	£68.00
1900	x	400	£80.00
1900	x	500	£86.00
1900	x	600	£90.00
1900	x	700	£93.00
1900	x	800	£98.00
1900	x	1000	£104.00
1900	x	1200	£109.00
1900	x	1500	£121.00
1900	x	2000	£145.00
960	x	1500	£103.00

Posts

40 x 40 x 2020Lg	£59.00
60 x 60 x 2020Lg	£79.00
60 x 60 x 1080Lg	£65.00

Standard hinged door →



Access Doors

£575.00 FOR SINGLE SWING DOOR

Standard hinged door complete with top rail, hinges and inside/outside locking handle based on 800mm wide standard panel. 950mm o/a width including posts.
Fully assembled and ready to fit.
Optional interlocks supplied and fitted, or free issue locks can be fitted.

Sliding Doors

£950.00 FOR SINGLE SLIDING DOOR

With top rail. 1450mm opening. Fully assembled and ready to fit. Complete with inside/outside locking handle.
Includes adjacent 1500 wide panel + 3 60x60 posts, total length of unit 3130mm.
Drawing of Sliding Door available on page 3 of this document.

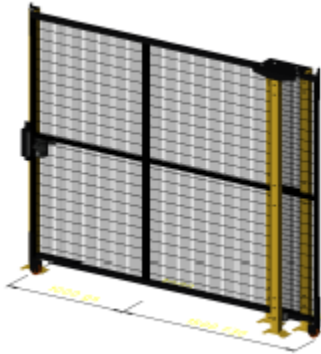
Other door options include:

Bi-fold, Counterbalanced rise & fall and Cantilever Doors. All to proven standard design.



Cantilever stock rolling door

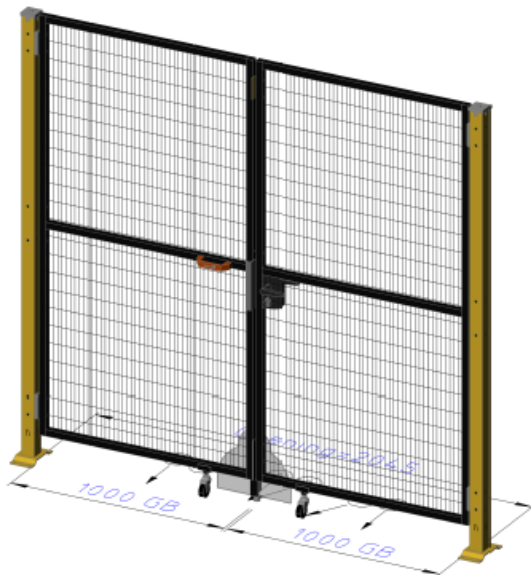
£895.00



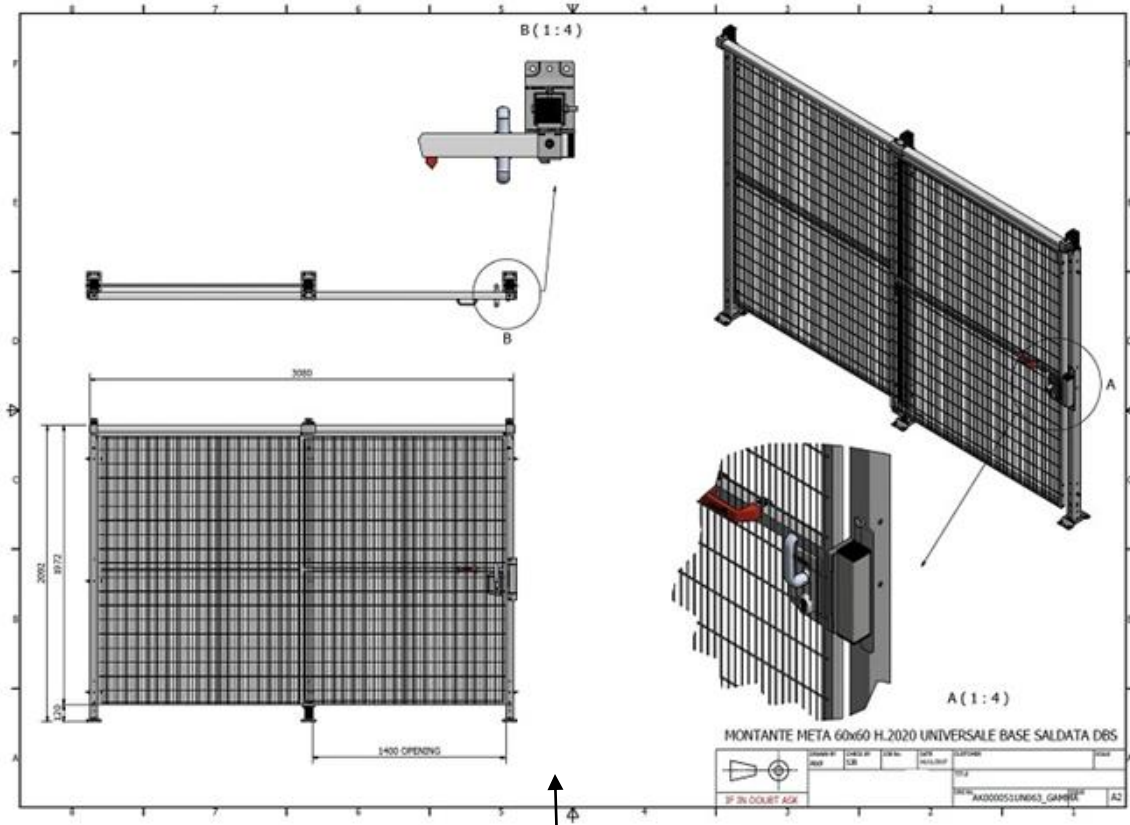
Includes: Rolling guided door 2000 open access complete with locking T handle & guided alignment. Includes 250 wide panel, door & 4 x 60x60 support/end posts.

Double hinged door

£795.00



Includes: Both doors, key locking & drop bolt, 2 castors. Polycarbonate cover guard to prevent under reach to drop bolt. Includes 2 x support posts.



Drawing of 1450mm opening Sliding Door



All items available ex-stock.

Full installation also available.

**CALL us today
0121 585 8730.**